



Sieve Shaker Manual



ML4325/4330

Thank you for purchasing the ML-4325 sieve shaker. You and your company will have many years of use from this quality testing system. This sieve shaker has the ability to accommodate a variety of sieves from 3 inch up to 8 inch diameter or metric equivalent.

Installation

The ML4325 sieve shaker meets or exceeds ASTM C136 specifications and has been shipped complete and ready for operation. It is recommended that the base be properly fastened to a rigid platform, or on the floor using bolts or fasteners of sufficient size. Plug power cord into an appropriately grounded outlet.

Please note that sieves are not supplied with machine, they can be purchased separately or in nests. For more details on sizes, pricing and availability visit us online at www.mltest.com or email us at info@mltest.com

Operation

Select the sieves with the appropriate mesh sizes that are to be used and stack them together beginning with a pan at the bottom. Then the finest sieve followed by increasing coarser sieves with the coarsest on top. Place stack of sieves in the shaker with the bottom pan resting on the cradle platform. Cover the top sieve so that the stack can be easily secured in the shaker. Secure the stack with the sieve hold-down bar on the top of the stack and tighten using fastener knobs on each side.

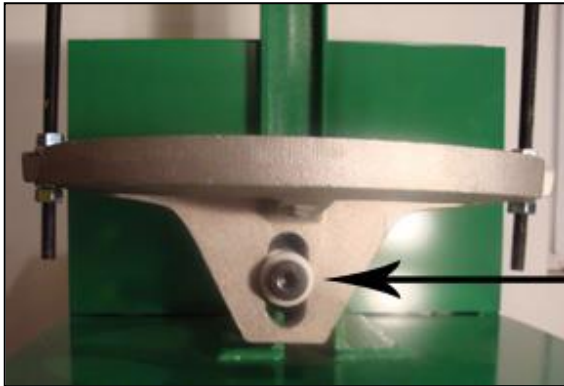
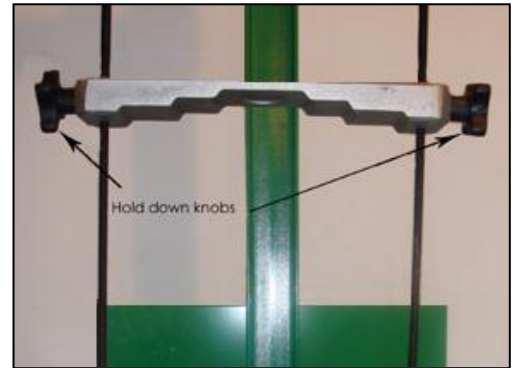
Shaker is now loaded and ready for testing. Your shaker is equipped with a 30 minute timer. Turning the timer will start the shaker immediately, adjust timer for desired length of time. The shaker will stop once the desired amount of time has run out.

Caution! Sieve shaker has several pinch points! Keep hands and loose clothing away from moving parts while the machine is in operation. Manufacturer/distributor will not be held responsible for any injuries.

How To Adjust

Place the stack of sieves on the shaker and load sample. Secure with the hold-down bar, clamping it in place with the knobs on each side.

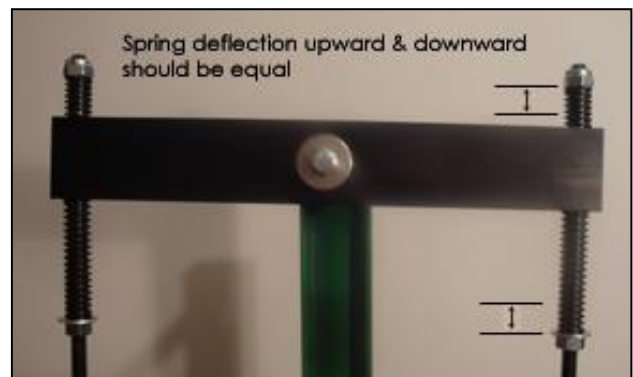
CAUTION: Disconnect power before performing any adjustments to shaker

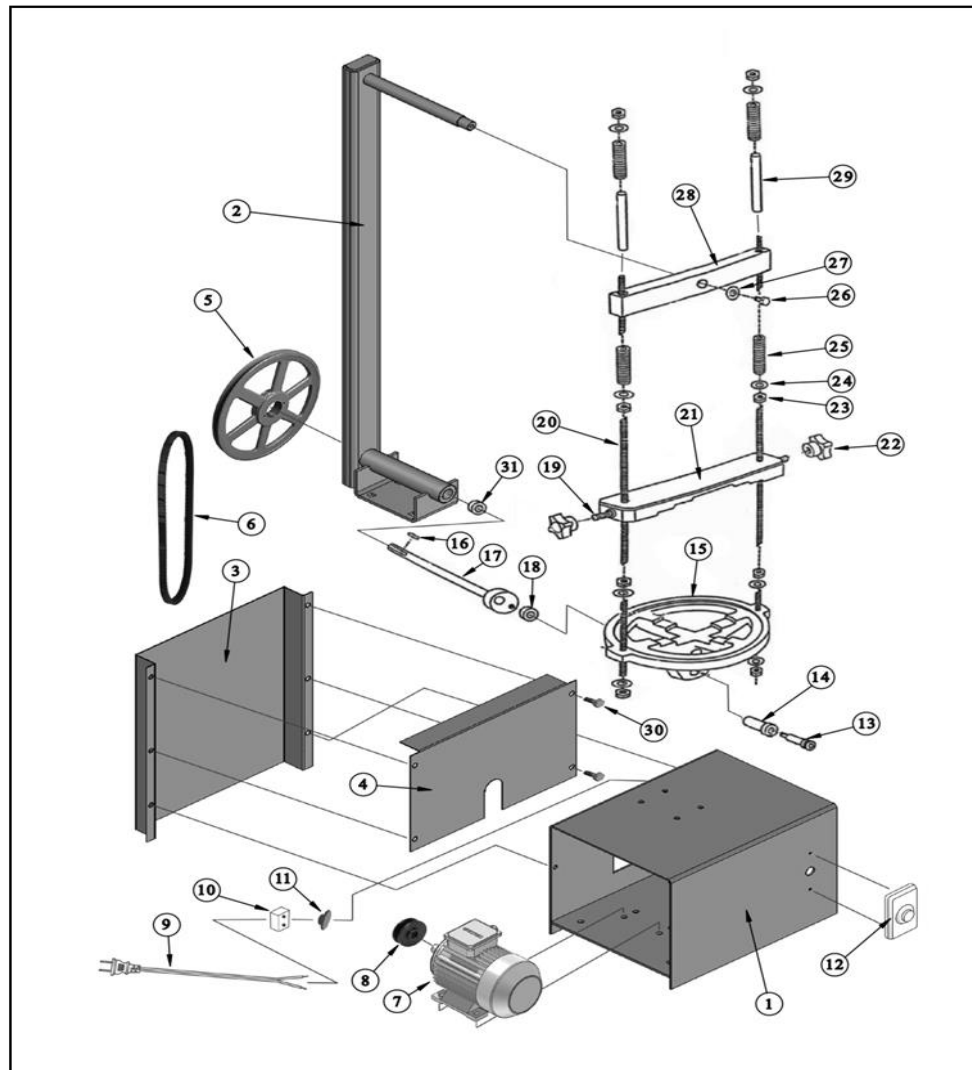


Depending on the weight of the sieve stack, an adjustment of the lower cradle may be necessary. Turn the large pulley and note when the eccentric drive has moved the bottom cradle to the extreme right or left of its travel. At this point the shoulder bolt and Teflon bushing should be in the middle of the vertical slot (in lower part of the cradle)

If it is not, loosen the top clamp knobs and the hex nuts which position the bottom cradle on the threaded rods, then adjust upward or downward until the shoulder bolt with Teflon bushing is centered. Retighten the fasteners (hex nuts and knobs).

When operating correctly, the movement upward and downward of the rod springs should be approximately equal. Test for this by hand turning the pulley one revolution and note the spring deflections at the top and bottom of the travel. If they are not equal repeat the adjustment until they are approximately equal. Once equal, adjustments are finished.





1	ML4325.1	Chassis	17	ML4325.6	Cam Shaft
2	ML4325.1.2	Chassis Mast	18	ML4325.8.2	Teflon Washer
3	ML4325.10	Back Guard	19	ML4325.16.1	Threaded Eye Bolts (x2)
4	ML4325.10.1	Back Guard "B" Cover	20	ML4325.13.1	Threaded Rods (x2)
5	ML4325.4.1	12" Pulley	21	ML4325.12	Hold Down Bar
6	ML4325.4.3	Vee Belt	22	ML4325.16.4	Hold Down Bar Knob (x2)
7	ML4325.3.1	Motor	23	ML4325.17.1	Hex Nut 5/16 x 3/4 (x16)
8	ML4325.4.4	1.5" Pulley	24	ML4325.17.2	Washer 5/16 (x16)
9	ML4325.3.3	Power Cord	25	ML4325.15.1	Spring (x4)
10	ML4325.20	Electrical Box	26	ML4325.18	Bolt 1/4"
11	ML4325.21	Grommet	27	ML4325.18.1	Washer 1/4"
12	ML4325.2	Timer	28	ML4328.14.1	Crosshead
13	ML4325.9	Shoulder Bolt	29	ML4325.15.2	Sleeve (x2)
14	ML4325.8.1	Teflon Bushing	30	ML4325.17	Bolt 5/16 x 3/4" (x16)
15	ML4325.11	Sieve Cradle/Base Plate	31	ML4325.5	Bronze Bushing (x2)
16	ML4325.6.1	Key Way	32	ML4325.17.3	Lock Washer (x16) Not Shown

(When ordering parts for 12" shaker, use ML4330.XXXX)

Maintenance

- 1 – Disconnect power before performing any service or adjustments on machine
- 2 – Clean shaker periodically
- 3 - Grease the drive shaft periodically, depending on usage.
- 4 - Periodically check all fasteners for tightness

Warranty

M&L Testing Equipment warrants this product to be free from defects in material or workmanship for one full year. M&L Testing Equipment will free of charge replace any parts and provide mechanical service necessary for proper operation, except for normal maintenance. If shaker has been misused/alterd or improperly maintained, warranty is void and null. Warranty service is available by returning shaker to point of purchase. Purchaser is responsible for any or all transportation charges.



Ontario Office: 31 Dundas Street East, Dundas, ONT L9H 7H8
Toll Free: 1-800-263-9244 **Website: www.mltest.com**
Local: 905-689-7327 **Email: info@mltest.com**
Fax: 905-689-3978

Calgary Office: 4530 14 St NE, Calgary AB, T2E 6T7
Toll Free: 1-800-663-4779 **Website: www.mltest.com**
Local: 403-250-6765 **Email: calgary@mltest.com**
Fax: 403-250-6803